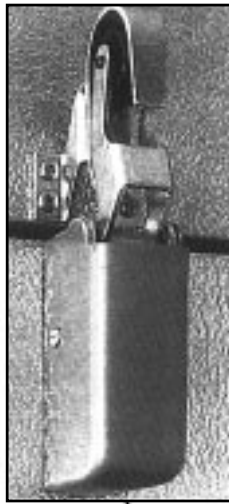


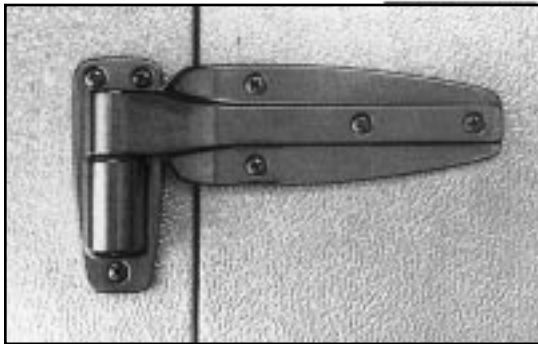
# STANDARD FEATURES



# 1

## DOOR CLOSER

Steel mechanism. Heavy duty. Hard rubber wheel. Spring activated within 10° of closed position.



## HEAVY DUTY HINGE

High pressure die cast zinc. Heavy chrome plating. Cam-lift system (**self-closing cam-lift system**). (NSF). Flush with frame.

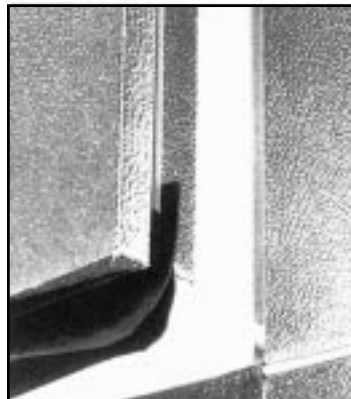
# 9



## DIAL THERMOMETER

Remote sensitive bulb. capillary-tin plating. Stainless steel casing. dual temperature scales. (NSF)

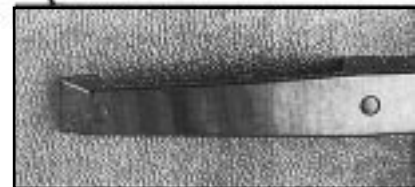
# 8



# 7

## FLUSH DOOR GRAVITY SELF CLOSING

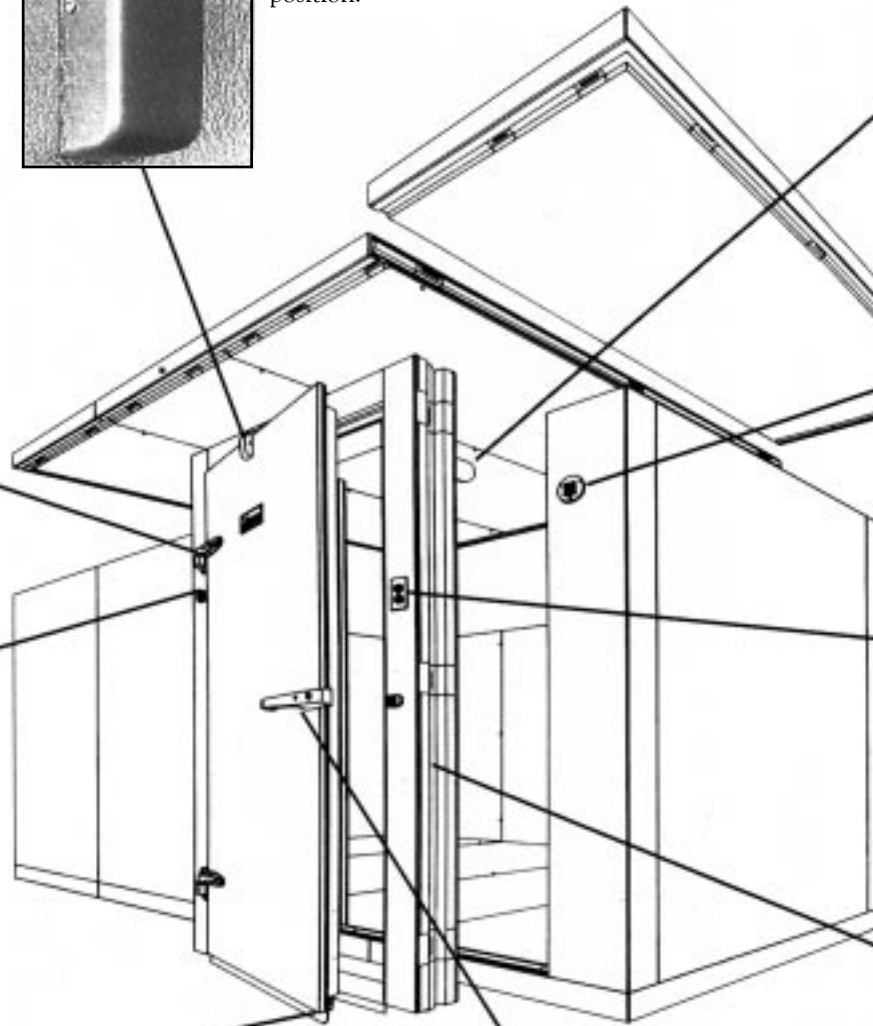
Magnetic gasket. (NSF), **F.R.P. Fiberglass reinforced plastic door perimeter**. Double rubber sweepers. Heater in freezer only.



## LOCKING HANDLE

Chrome plated die cast aluminum handle 90° safety release mechanism. Jam proof. **Keyed locking**.

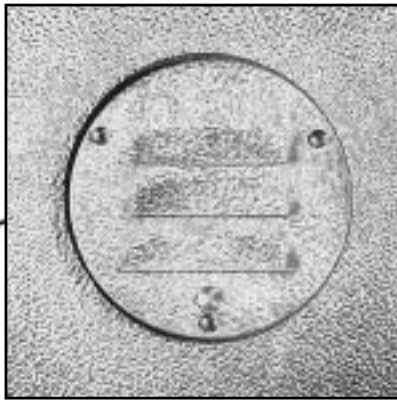
# 6





# 2

**VAPOR PROOF LIGHT**  
Cast aluminum junction box. Lexan globe. Fully gasketed and enclosed to reduce humidity, effects. 110 volts. (UL, NSF, CSA)



# 3

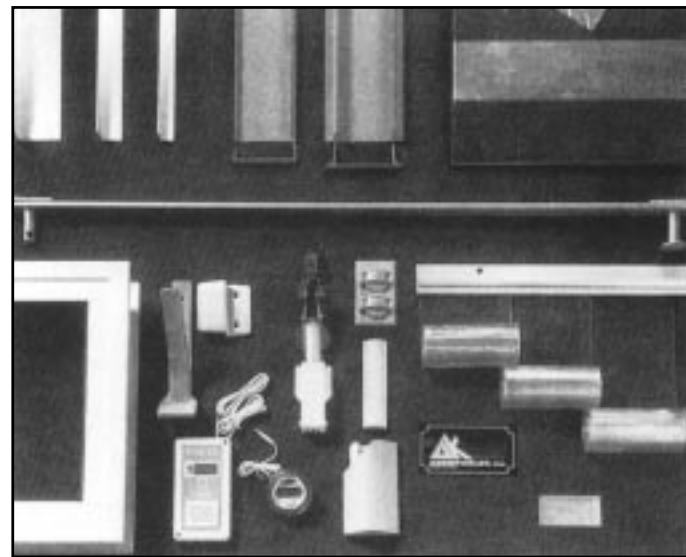
**HEATED PRESSURE RELIEF PORT**  
All metal parts aluminum. Self-extinguishing Lexan sleeve. Two-way valve. (UL, NSF, CSA).  
New: 10-10-02 installed in door frame.



# 4

**LIGHT SWITCH**  
Stainless steel faceplate. 110 volts. Pilot light (UL). 220 volts optional.

# OPTIONAL FEATURES

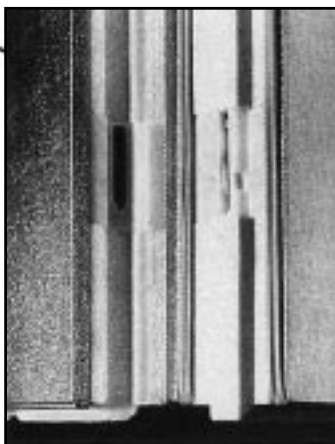


- 1- Audiovisual alarm
- 2- Aluminum floor angles
- 3- Aluminum treadplate
- 4- Bumper rail
- 5- Digital thermometer
- 6- Door closers
- 7- Foot treadle
- 8- Interior and exterior ramp
- 9- Locking bar
- 10- Rainhood (not shown)
- 11- Strip curtain
- 12- Vinyl screeds
- 13- Vision panel
- 14- Weather proof switch

Call us for other optional features, quotation or additional information.

## PANEL CONSTRUCTION

- a - Insulations: Class I, 4 Polystyrene for coolers. 4 Polyisocyanurate urethane foam for freezers or coolers. No air pockets. Urethane smoke density 200, flame spread 20, CFC free. UL, Factory Mutual Listed.
- b - Metal skin acrylic coated stucco embossed galvalume.
- c - NSF boxes with stainless steel floor.
- d - 1/2 x 3/8 thick flexible vinyl close cell sponge gasket.
- e - Non-corrosive cam-lock, max. 37 apart.
- f - All door and frame with urethane insulation.
- g - All vertical wall corners and NSF floor with 1/2 radius for sanitation.



# 5





# QUALITY CONTROL

Now Equipped with New Robotic Automated Manufacturing CAD-CAM System, On A 110,000 Sq. Ft Facility.

(Oct 10, 2002)

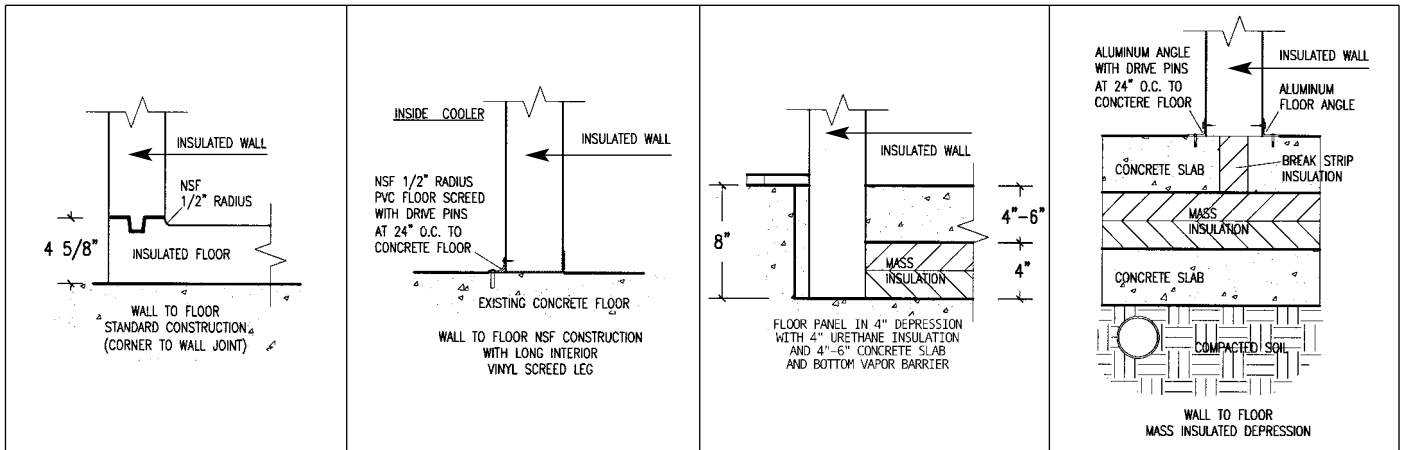
All our walk-ins are pre-assembled and inspected before shipping.

In a world of ever changing technology, applications and methods, **Amerikooler, Inc.** was established on principles that do not change. Integrity, reliability, responsibility, and quality products. We incorporate these principles and commitments in all phases of our operations and in the continued striving for improvements in all our activities.

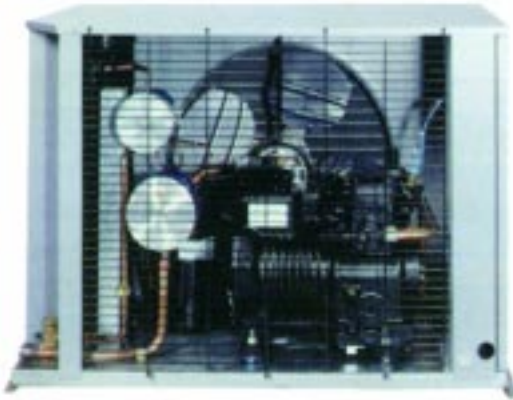
Our goal is to be recognized as the best possible panel manufacturer and a leader in the cold

storage industry. We solicit your consideration of our capabilities as they apply to your next project.

**Our packaging method has been designed with the customer in mind. Two panels are packed together with stretch plastic wrap and corners are protected with 2 1/2" x 6" foam making the packages very light in weight, easy to load, unload, handle and store it at job site without the need of forklift.**



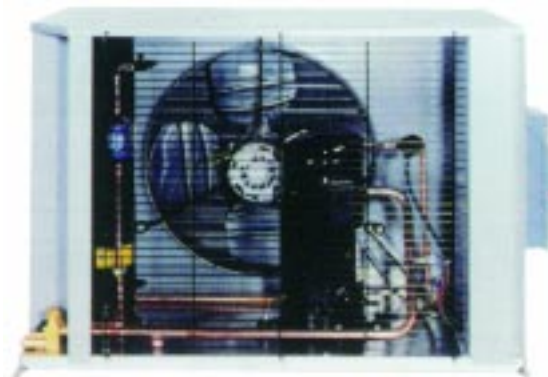
All units are pre-wired, pre-assembled (All accessories and electrical components).



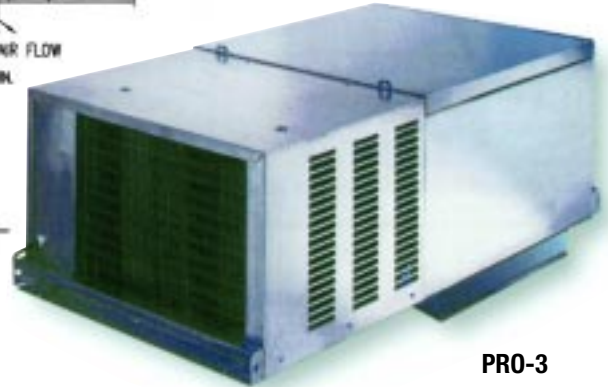
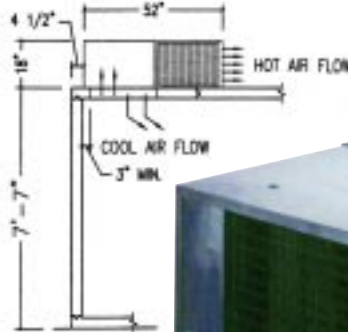
Semi-hermetic



Semi-hermetic



Hermetic



PRO-3

Top-mounted, self-contained.  
Ready to plug-in with 26" electrical cord.

#### TEN YEAR LIMITED WARRANTY

AMERIKOOLER, INC. warrants to the original purchaser-user its cooler and freezer panels for a period of **ten years** after day of installation by an authorized representative. Any of our manufactured part which shall prove to be defective in material or workmanship and after an authorized inspection by a field representative will be repaired or replaced at our option free of charge. F.O.B. factory if the part was used under conditions of normal use and service in the location where originally installed. The user will have the responsibility and expense of removing and returning the defective part to AMERIKOOLER, INC., as well as the cost of shipping and re-installing the replacement part. Doors for a period of 5 years.

This warranty does not apply to accessories or refrigeration equipment sold or supplied by AMERIKOOLER, INC., but manufactured by other companies, who furnish their own warranties.

Defective conditions caused by lack of or improper maintenance, abnormal use or misuse, damage by third parties, acts of God, alterations, failure to follow safety or installation instructions or any other event beyond the control of AMERIKOOLER, INC., will not be covered under this warranty.

THIS WARRANTY IS EXCLUSIVE AND IN LIEU OF ALL OTHER WARRANTIES EXPRESS OR IMPLIED, INCLUDING THE IMPLIED WARRANTIES OF MERCHANTABILITY AND FITNESS FOR PARTICULAR PURPOSE.

In no event shall AMERIKOOLER, INC., be liable for loss of use, revenue or profit or for any other indirect, incidental, special or consequential damages, but not limited to losses involving food spoilage or product loss. This warranty shall apply only within the Continental United States, its territories and possessions.

#### WE APPRECIATE YOUR BUSINESS

We reserve the right to make changes without prior notice.

Panels Accepted For Use  
City of New York  
Department of Buildings  
MEA 113-87-M



MIAMI DADE  
South Florida Building Code  
Approved



Panels Accepted For Use  
City of Oregon  
Building Code Agency  
Reg. No. 213PFL

AMERIKOOLER's new 110,000 sq. ft. facility is located in Hialeah, Florida with convenient service capability to 50 states by all national freight carriers, and ideally situated to provide service for our overseas customers via several nearby seaports and international airports.